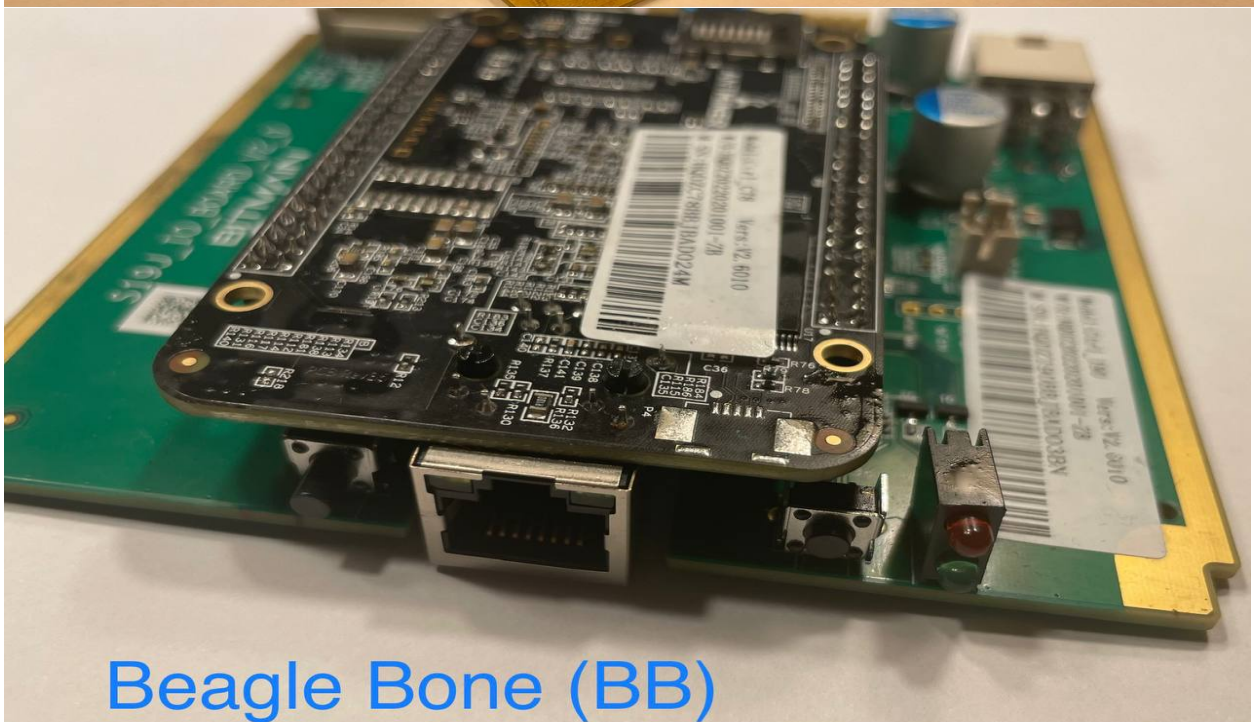
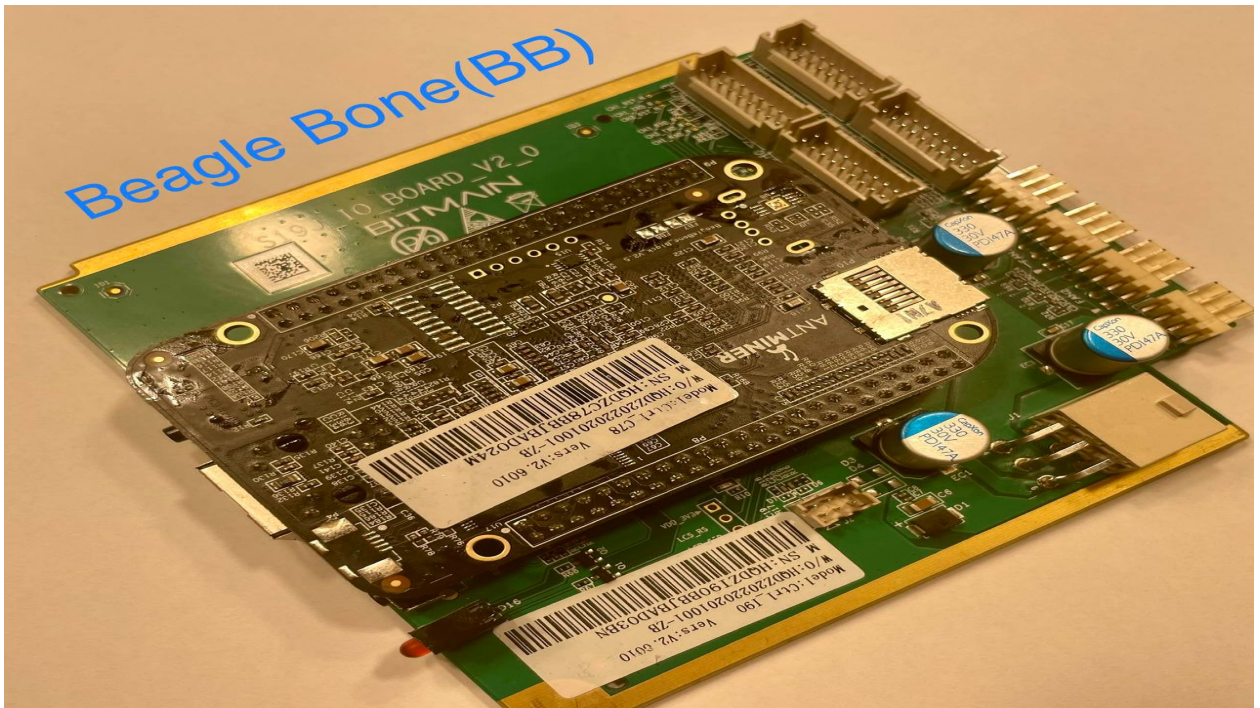


Instructions for installing MskMiner firmware on Bitmain 19series

Before installing the firmware, find out the type of control board of the miner. Two types of boards are supported: **XILINIX** and **BEAGLE BONE (double deck BB)**, **AMLOGIC** control boards (in development, **NOT supported at this moment**)

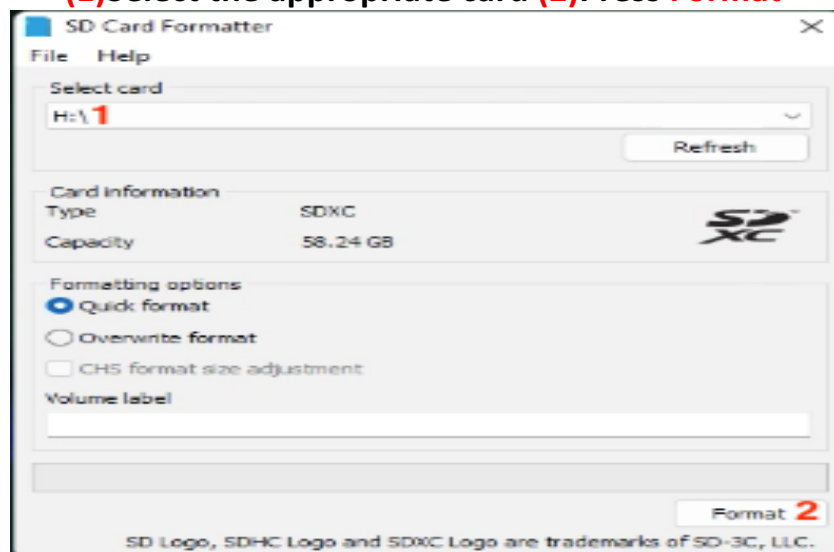
1.If a **BB** control board is installed in the equipment, the SD card slot is located directly on the board. The ETHERNET port is on the opposite side.



REQUIRED REQUIREMENTS: SD card (up to and including 16gb) Prepare the SD card: 1. Format the SD card to FAT32 (standard cluster size)

We recommend using SD Card Formatter

(1)Select the appropriate card (2)Press Format



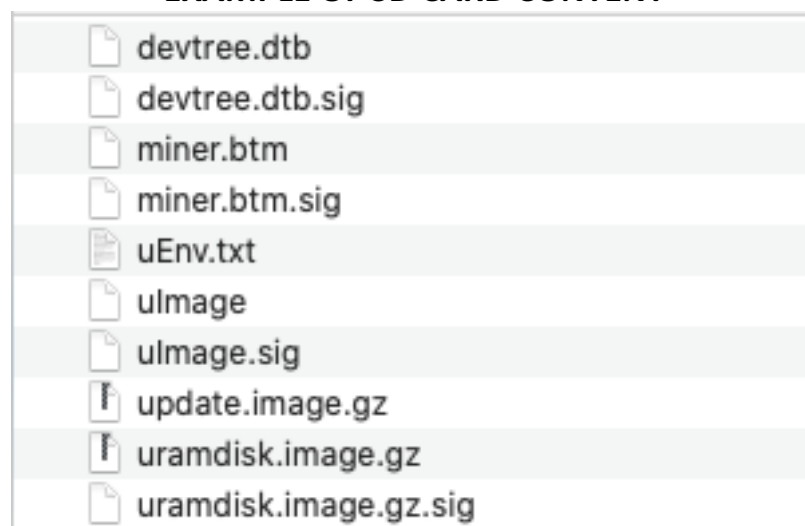
2. Download the appropriate firmware with a ZIP extension

3. Unzip the downloaded ZIP file and copy the contents to the MicroSD card.

FURTHER: 1. TURN OFF THE ASIC.

2. INSERT THE SD AND LEAVE IT IN THE DEVICE, IF YOU TAKE OUT THE SD THE STOCK FIRMWARE WILL START.

EXAMPLE OF SD CARD CONTENT




IMPORTANT-AFTER INSTALLING THE FIRMWARE DO A PERFORM RESET

System | Miner Configuration | Miner Status | Network | Report a Bug

Overview | Administration | Monitor | Kernel Log | Watchdog Log | **Upgrade** | Reboot | Locate

Upgrade

Backup / Restore
To reset the firmware to its initial state, click "Perform reset" (only possible with squashfs images).

Reset to defaults: 

Flash new firmware image
Upload a sysupgrade-compatible image here to replace the running firmware. Check "Keep settings" to retain the current configuration.

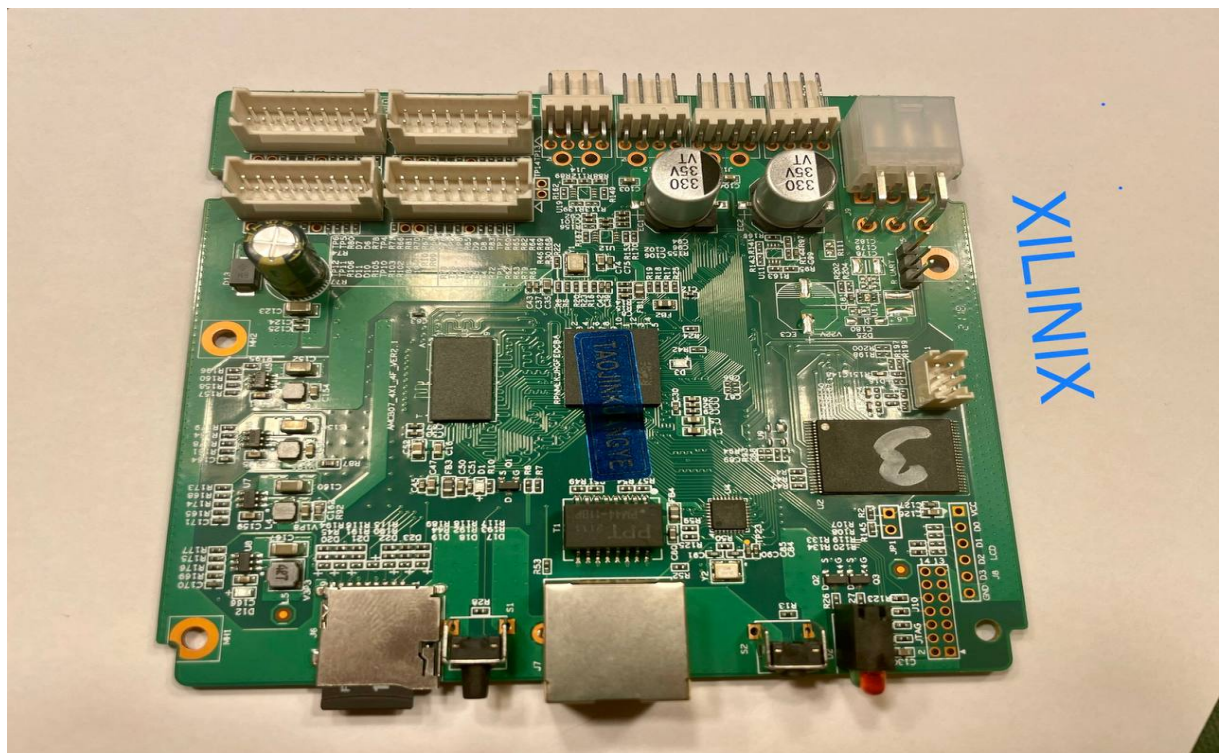
Keep settings: ☒

Image: Файл не выбран.

2.If you have a XILINIX control board with a SD card slot on the front panel.
IMPORTANT: If you are using an **S17E, S17+** control board, we recommend that you use firmware that is marked accordingly (if you flash it with the Bitmain firmware from the 19 series, you cannot roll it back to 17), then the control board will remain universal.

Antminer S19j v.1.3.9 SD card boot for
S17E/S17+ control board

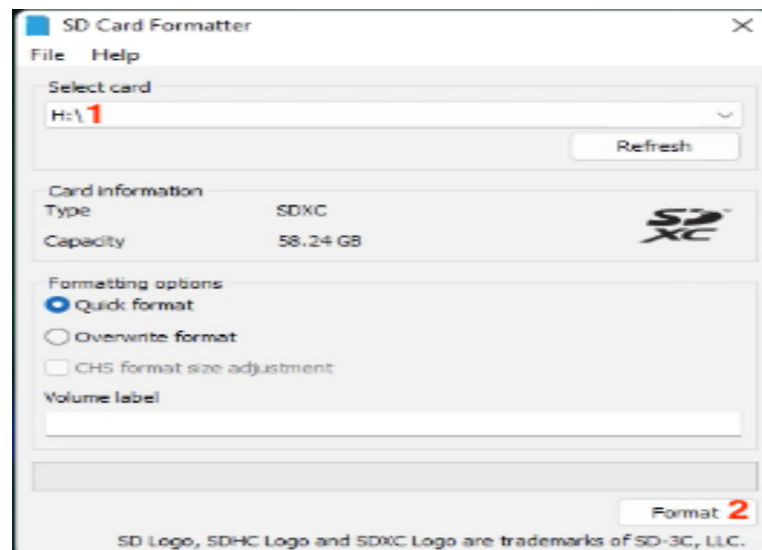
You will need to create an SD image of the IMG for [win32diskimager](#) or [Balena Etcher](#)



REQUIRED REQUIREMENTS: SD card (up to and including 16gb) Prepare the SD card: 1. **Format the SD card to FAT32 (standard cluster size)**

We recommend using SD Card Formatter

(1)Select the appropriate card (2)Press **Format**



2. Download the appropriate **IMG image with the extension **IMG.zip****

 S19_1.3.9_SD_17_xilinx_based_on_S17E_MSK_firmware.img.zip	27,9 МБ	Архив ZIP
---	---------	-----------

3. **Extract the .img image file from the Zip file**

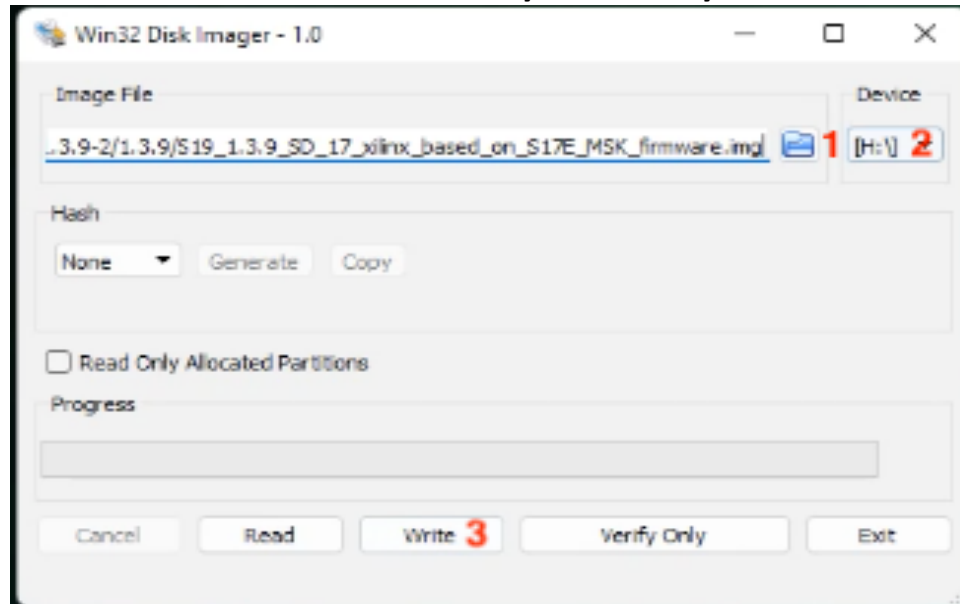
 S19_1.3.9_SD_17_xilinx_based_on_S17E_MSK_firmware.img	268,4 МБ	Образ диска NDIF
---	----------	------------------

4. Using [win32diskimager](#) Write the image to an Sd card

IMAGE CREATION:

1. choose the desired image with the extension **IMG**
2. choose the path of installation-**Sd card**
3. press **WRITE**.

when done-Sd card is ready for use in your miner



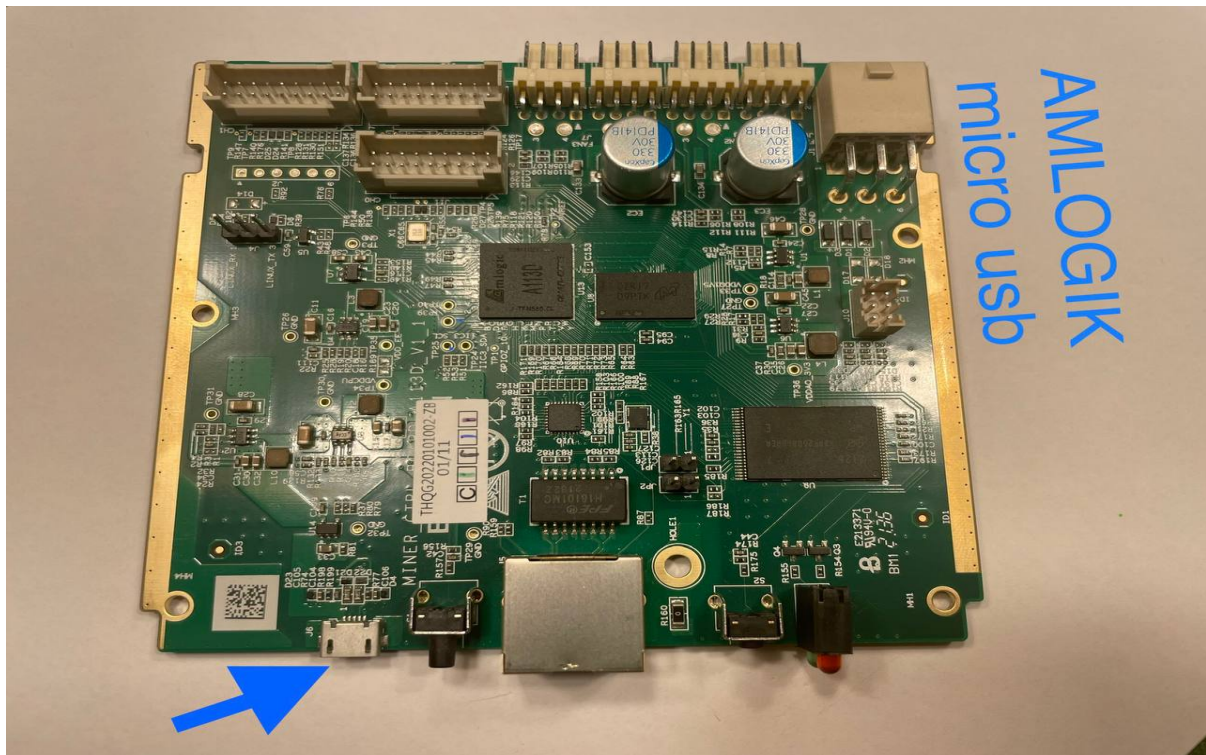
An example of the contents of an Sd card after an image has been written

devicetree.dtb	25.10.2022 15:26	Файл "DTB"	8 KB
devicetree.dtb.sig	25.10.2022 15:26	Файл "SIG"	1 KB
miner.btm	25.10.2022 15:26	Файл "BTM"	2 KB
miner.btm.sig	25.10.2022 15:26	Файл "SIG"	1 KB
uEnv.txt	25.10.2022 15:26	Text Document	1 KB
ulimage	25.10.2022 15:26	Файл	3 963 KB
ulimage.sig	25.10.2022 15:26	Файл "SIG"	1 KB
update.image.gz	25.10.2022 15:26	Архив WinRAR	512 KB
update.image.gz.sig	25.10.2022 15:26	Файл "SIG"	1 KB
uramdisk.image.gz	25.10.2022 15:26	Архив WinRAR	22 770 KB
uramdisk.image.gz.sig	25.10.2022 15:26	Файл "SIG"	1 KB

FURTHER:

1. TURN OFF THE ASIC.
2. INSERT THE SD AND LEAVE IT IN THE DEVICE, **IF YOU TAKE OUT THE SD THE STOCK FIRMWARE WILL RUN.**

On the AMLOGIC control board, the firmware is in development



IMPORTANT!!!

Why asic does not want to flash from SD, 2 lights are on all the time:
Virus - check on pause as LEDs light up
SD card is not prepared correctly
SD card is bigger than 16gb, file system is NOT FAT 32.
Make full, not quick format SD
No chip near SD
Contacts are oxidized - poke the card back and forth, press with your finger
Jumper (only on S9 T9+) contact is bad or not repositioned